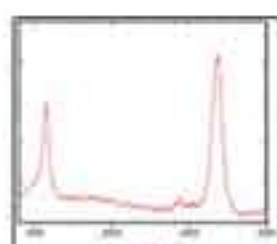


**CVD Process Development**[Application Lab](#)**CVD for Research & Development**[EasyTube™ CVD Systems](#)[EasyTube™ 101](#)[EasyTube™ 2000](#)[EasyTube™ 3000](#)[EasyTube™ 4000](#)[EasyTube™ 6000](#)[EasyGas™ 1000](#)[EasyGas™ 1500](#)[EasyExhaust™](#)**CVD/First Nano
Application Lab**

First Nano, a division of [CVD Equipment Corporation](#), offers access to our Application Lab where Nano/Solar/Energy material processes can be developed in conjunction with First Nano/CVD research scientists. We strive to accelerate commercialization of Nano/Solar/Energy Fields.

CVD for Production[ALD](#)[APCVD](#)[LPCVD](#)[TCO Deposition](#)[Cluster Tools](#)[MOCVD](#)[Reel to Reel](#)[Custom CVD](#)**Carbon Nanotube Synthesis:**

- Vertically Aligned CNT from 20µm to 18mm
- Horizontally Aligned Single Wall CNT
- MW and DW/SW Vertically Aligned CNTs on various substrates
- Wafer Scale CNT growth
- Multi wafer CNT growth
- Volume production for Vertically Aligned CNTs
- Bulk CNT

CVD Graphene Synthesis:

- CVDGraphene™ on Ni
- CVDGraphene™ on Cu
- CVDGraphene™ for MEMS applications
- CVDGraphene™ TEM grids

Semiconductor Nanowires:

- Silicon nanowire
- ZnO nanowire
- GaN nanowire

Catalyst Wafer:

- Vertical and Horizontal Aligned Carbon Nanotubes
- Vertical and Horizontal Aligned Silicon Nanowires

Substrate Coating (Flat and Curved):

- Catalyst layer: Fe, Ni, Co, Au, etc.
- Conductive layer: Mo, Cr, Al, Au, etc.
- Ion assisted Thin Film Deposition: SiO₂, TaO₂, TiO₂, etc.
- Other materials available upon request.

APCVD:

- TCO
- Low-e
- Photovoltaic

Epitaxial Films:

- Si for Solar Cell

Lab Equipment List:

- EasyTube™ 2000
- EasyTube™ 3000
- EasyTube™ 6000
- Small E-beam Evaporator for Catalyst Deposition
- Large E-beam Evaporator for volume ion assisted Optical Thin Film Multi-Stack deposition on flat and curved substrates with high uniformity and volume Catalyst Wafer Deposition
- Sample Preparation Lab

In-House Analytical Equipment includes:

- Carl Zeiss SEM
 - *Backscatter Detector
 - *Secondary Electron Detector
 - *STEM Detector
- Optical Microscope
- Four Point Probe
- Transmission and Reflection Measurements

Fees:

- Unassisted Lab time: \$250/hr, minimum 5 hrs.
- Assisted Lab time: \$300/hr, minimum 5 hrs.
- Analytical analysis starting at \$150/hr, minimum 1 hr.
- Minimum sample order \$500
- Volume discount available for larger orders
- Special process development and system customization available upon request

Contact us at (631) 981-7081 with your specific needs and we will provide you with a quotation.

Our other divisions, [CVD](#), [First Nano](#) and [Stainless Steel Design](#) supply a wide range of Chemical Vapor Deposition Equipment, Processing Solutions, Gas Delivery and Exhaust Treatment Systems to the research, quality control and production market. More information is available at www.cvdequipment.com.

CVD for Quality Control[Si-Precursor Quality Control](#)**Gas/Liquid Delivery & Exhaust Solutions**[Gas Delivery](#)[Chemical Delivery](#)[Custom Chamber](#)[OEM Manufacturing](#)[eLine™ Express UHP Welding](#)[ePanel™ Express Gas Panels](#)[Stainless Steel UHP Bubblers](#)[Forward to a Friend](#)